

# HYDROTEC System MAXI 150

## Ductile Grate / D400 / ADA

### Product Specifications

**Part. No.:**

M6DID - Long

**Load Class:**

D400 (88,000 lbs) according EN 1433  
 Certified by MPA-HB (independent laboratories)

**Material:**

Ductile Iron GJS-500-7

**Weight:**

16,98 lbs (7,7kg)

**Surface:**

Longitudinal slot design (0.47" x 1.02")  
 ensures high water intake.  
 Slots according ADA Standards

**Locking:**

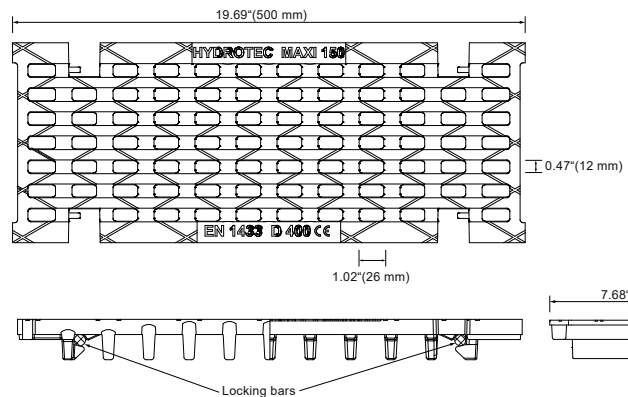
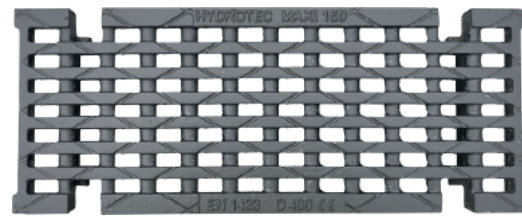
Patented boltless  
 grate locking system

**Water intake:**

114.08 sq. ins(736cm<sup>2</sup>)

**Use:**

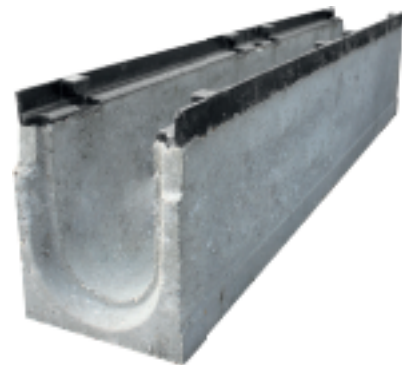
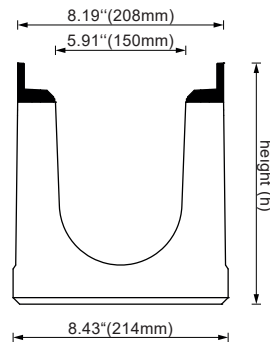
This grate is developed for use with HYDROTEC  
 MAXI 150 channels made of fiber reinforced concrete  
 with a ductile iron edge protection.



### Fiber Reinforced Concrete Channel

**Available heights(h):**

- 8.27" (210mm)
- 10.24" (260mm)
- 12.20" (310mm)
- pre-sloped (10 levels)



### System Specifications

**Grate Locking Tool (Part. No.:7009900) :**

The Grate Locking Tool is made of galvanized steel.  
 It's used to lock and unlock the grate.

**MAXI 150 Longitudinal Grate (Part. No.:M6DID - Long):**

The grate is made of ductile iron and certified to  
 EN 1433 Load Class D400.

**Locking Bar (Part. No.:0302401):**

Two locking bars fix the grate to the channel body.  
 They're unlocked by the Grate Locking Tool .

**MAXI 150 Channel (Part. No.:M6N...):**

The channel body is made of fiber reinforced concrete  
 with a ductile iron edge protection. Connecting profiles  
 at the end of the channel guarantee an easy and fast  
 installation.

